



Xplorer XF26

ASSEMBLY MANUAL





Xplorer XF26

1) Carefully open the carton remove the foam packaging material, then remove the bike and accessories.





Xplorer XF26

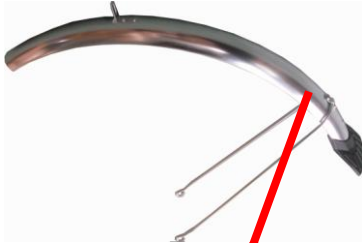
2) Attach Front tire assembly to the front fork, adjust the front fork and front wheel, install the nuts, then use the wrench to tight the nuts, (Noted the direction of the tire tread).





Xplorer XF26

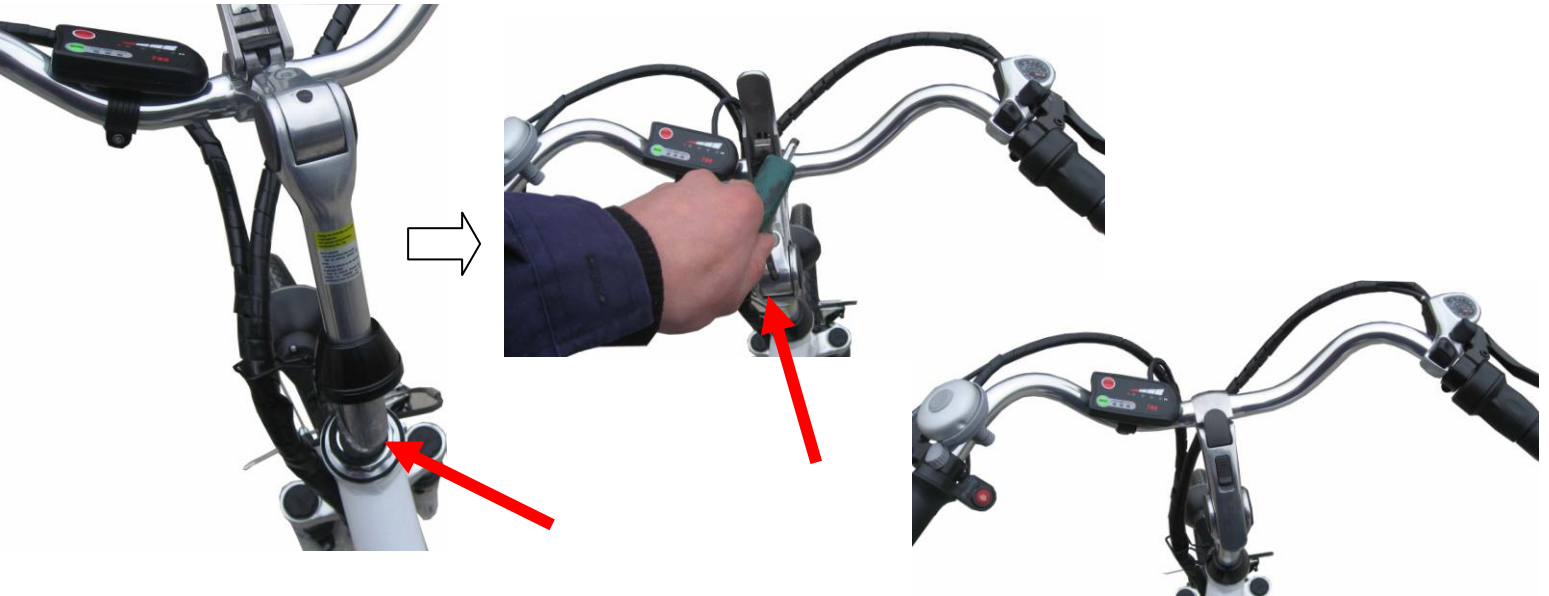
3) Front fender assembly: install the front fender on front forks. Position the fender to the Tire, tighten the screws as shown below.





Xplorer XF26

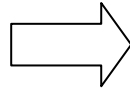
4) Handle Bar assembly: insert the stem into the front fork as shown below, adjust the height of the stem, adjust the direction to make handle bars are aligned parallel with front tire.





Xplorer XF26

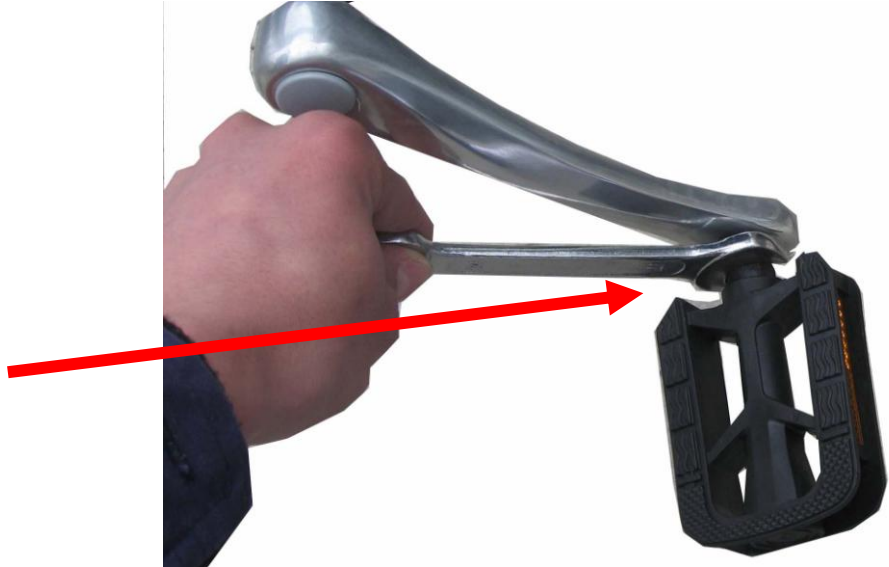
5) Seat post assembly: release the “quick release assembly”, insert seat post into the frame, adjust to desired height, then tighten the “quick release assembly”.





Xplorer XF26

6) Pedal assembly: insert and tighten the right and left pedal onto the cranks arm.(note the rotation and the left and right pedals which are Marked with “L” and “R”).





Xplorer XF26

7) Front V-brake: Insert brake cable sleeve into the slot as shown, note the front wheel should rotate freely and the brake pads should not be touching the rim. To adjust loosen nut and pull cable to desired position.





Xplorer XF26

8) Recheck assembly to ensure all nuts are properly tightened before use.

